

BULLETIN

SCOVILL

Published by Scovill Manufacturing Company for its Employees.

Vol. XLII

November 17, 1958

No. 22

Gene Fuller Selected by Westinghouse



Mr. Eugene V. N. Fuller (left) Waterville Div., accepts congratulations of Westinghouse Meter Div. Purchasing Agent W. A. Coates on being chosen Westinghouse's Salesman of the Month. The plaque held by Mr. Coates (with Mr. Fuller's picture to be inserted) will be displayed at that company for a month.

At a luncheon given in his honor, Mr. E.V.N. Fuller of our Waterville Division, was informed of his selection as the Salesman of the Month for October by members of the Purchasing Department of the Newark Meter Div. of Westinghouse Electric Corp. The affair was held in Newark on Oct. 17.

New Comptroller

The Scovill Board of Directors, at its meeting of October 30, 1958, appointed George H. Wadsworth Comptroller of the Company. He succeeds Ivan L. Coulter who resigned the position but continues as a Vice President on the Management Staff.

Mr. Wadsworth served in the Oakville Division for seven years before coming to Waterbury in May, 1953, as Asst. Comptroller. He assumed the additional duties of Accounting Controller, Waterbury Divisions and Services in February, 1957, serving in that capacity until his new appointment.



George H. Wadsworth

Mr. W. A. Coates, Purchasing Agent of the Meter Division, explained that the selection of Mr. Fuller was made in recognition of his able assistance and helpful suggestions which have enabled the purchasing department to reduce costs on several items of purchased materials. He further praised Mr. Fuller's technical knowledge to solve problems presented to him by the Meter Division.

In the Westinghouse News Release covering this selection, it is stated:—

"Westinghouse considers a supplier's ability to provide technical assistance and to keep it informed of important new developments in their field as one of the important factors in the selection of a supplier."

The close association developed between our salesmen and their respective buyers leads to a cooperative spirit and enables Scovill as a supplier to offer our vast services and resources to the benefit of valued customers.

Industrial Fastener Sales, Waterville Div., is justly proud of this accomplishment by one of their salesmen.

Vito Corbo Retires

VITO CORBO retired from active service with a continuous service record of over 43 years.

Always in the Waterville Division, Mr. Corbo was hired as a trucker in the Plating Room in May, 1915. In 1943 he was transferred to Inside Trucking as an elevator operator, serving in that capacity until October, 1957, when he was transferred to maintenance work. Illness caused him to leave in April of this year. He retires as of November 10, 1958.

Results of First Nine Months' Operations

Summarized below are the financial results for the Company and subsidiaries for the first nine months of this year:—

	1st 9 months 1958	1st 9 months 1957
Net Sales	\$85,956,347	\$98,629,774
Net Income (Loss)	\$ (683,085)	\$ 2,733,721
Earnings per Common Share (after preferred dividends)	—	\$1.59
Common Shares Outstanding	1,588,054	1,588,054

Figures do not always speak for themselves.

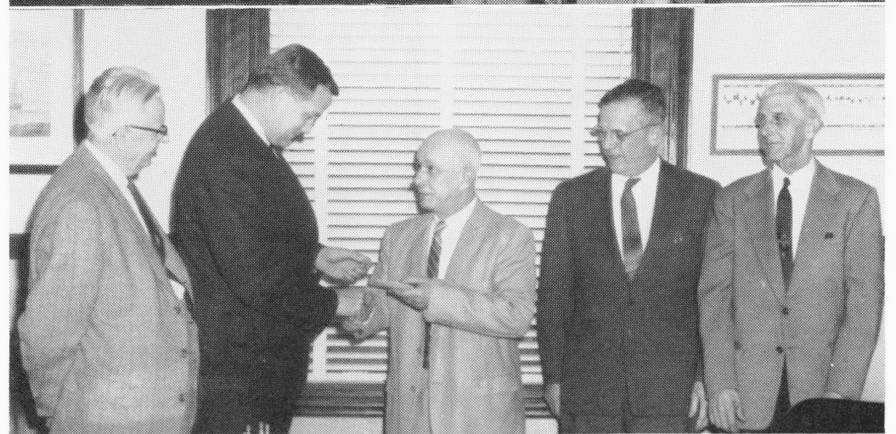
The ones above do show the cumulative effect of the recession and the tough price competition of the many other companies competing with us for available business.

They do not show the progress already made in our initial programs to reduce costs, to improve our product lines, and to provide more efficient equipment and methods.

It will take time and a good deal of hard work before the results of what we have done, and what still remains to be done, are seen in our financial reports. But I am confident that we are moving in the right direction. By continuing to pull together, we can expect to see an improvement in the reports for succeeding periods.

S. T. Williams
President

50, 40-Year Pins to Waterville Men



Upper photo—Roy A. Ferris, head of the Waterville Div. Order and Billing Dept., accepts congratulations from General Manager George A. Goss on the completion of 50 years' continuous service. On hand were: Asst. Accounting Manager Walter Fabnestock and Asst. General Manager Arthur H. Goepel.

Lower photo:—Sam Russo, toolsetter in Roll Threading, receives his 40-year pin and certificate from Mr. Goss. Looking on are Plant Manager L. G. Robinson (left), Factory Supt. J. A. Muckle and Foreman C. G. Granoth.

BULLETIN

Published by Scovill Manufacturing Company for its Employees.
99 Mill Street, Waterbury, Connecticut

Managing Editor: MARGARET E. FENSKE

Art Editor: GEORGE E. SLATER

Photographers: Earle C. Pierce, Adam Wolak

"We pledge ourselves to investigate thoroughly for accuracy before publication the material presented in THE BULLETIN."

Vol. XLII

November 17, 1958

No. 22

Memo From Management Let's Be Realistic

We have no business until a customer gives us an order. For each order there are many willing suppliers. That makes competition—and the order goes to the one with the winning combination of price, product, and service.

Price. Product. Service. If we are to endure, each of us who works at Scovill must contribute to one or more of these elements of customer acceptance. For competition is ruthless in weeding out unfit suppliers.

Scovill is many businesses—each with its customers and competitors—each with its products—and each must stand on its own feet profit-wise. In our Mills Division, for example, competitors are relatively few, but are large in size because of the heavy investment in equipment needed to produce mill products. Our manufacturing divisions have hundreds of competitors located throughout the country. Some may be small and limited in equipment and skills, but they are still competing for our customers and our jobs.

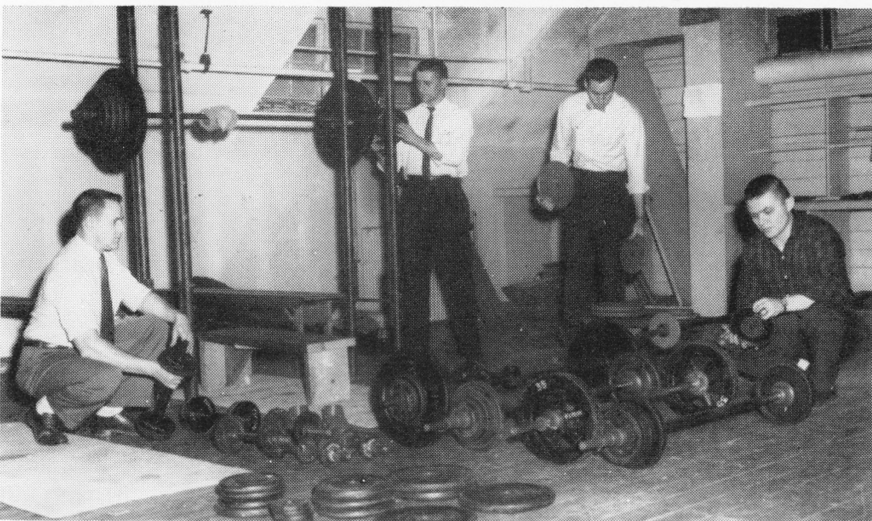
The ability of our company to earn necessary profits depends upon the ability of its several operations to meet the competitive challenges that they face. Some areas and product lines are not meeting this challenge and operate at a loss. In past years, the Company as a whole has made a profit because these losses have been less than the combined profits of other divisions. This has not been true this year, and as a result, the Company has operated at a loss for the first nine months.

Our ability to compete depends in large part upon the efficiency of our equipment and methods, the skill and ingenuity of our employees, the quality of our products, and the strength of our sales and distribution organization.

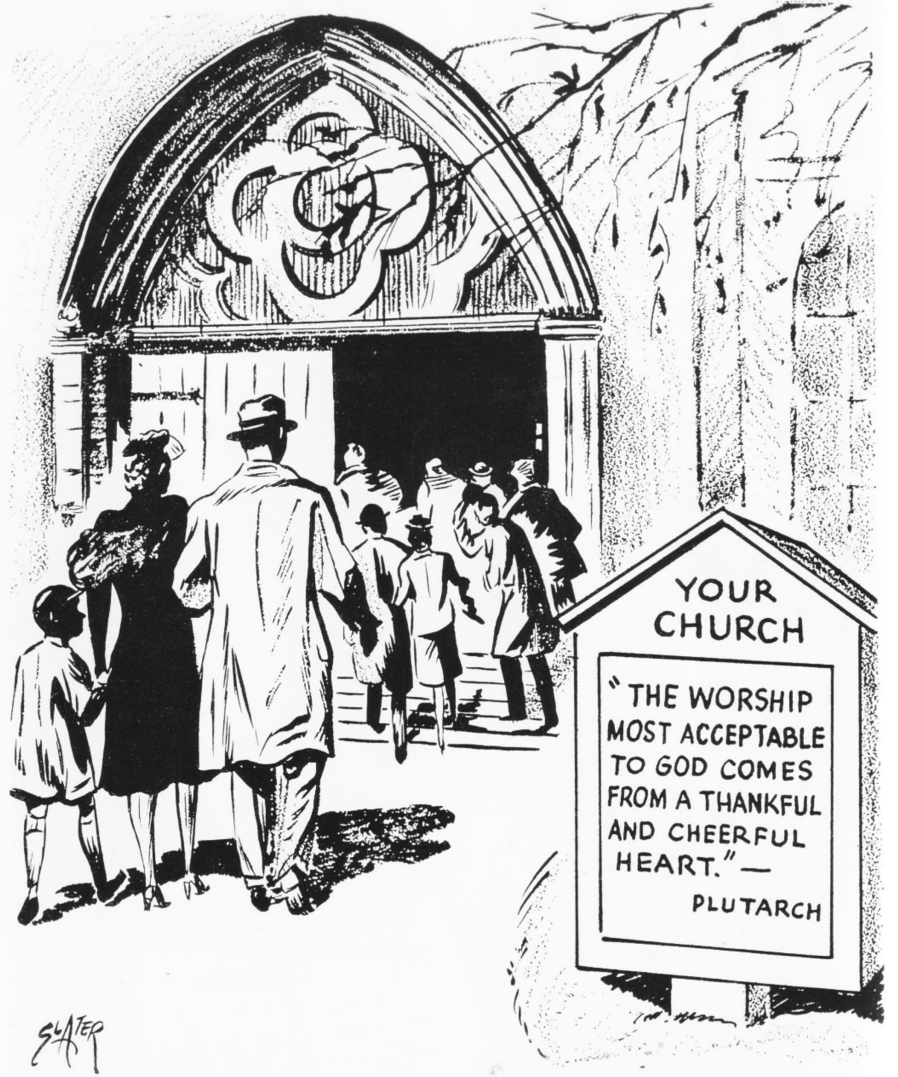
Wages are another important factor in our ability to compete. The average wages we pay in the Waterbury area are higher than the community average and the national average. These higher wages place us at a competitive disadvantage. Any further increases will reduce the competitive advantage of the new facilities that we are now providing in the Waterbury area.

Let's be realistic about the problems that we all face together. To improve our competitive position, we need a period of stability with no increases in cost. There is no job security in an unprofitable operation. Our competitors will see to that—they want our customers and our jobs.

Weight Lifting Classes Popular



Every weekday afternoon and evening, and Saturday morning, finds a group of Scovill men working out at Doolittle Hall. Members of the group have completely renovated the room over the stage and provided necessary equipment. Above, four of these men set weights in position in a corner of the room—they are: Walter Buczak, Giles Charland, Albert Garms and Leo Boucher.



Christmas Mailing Suggestions

"We all have a tendency to wait until mid-December comes before giving our Christmas mailing plans much attention," states Postmaster William J. Phelan. "By taking a little extra care with Christmas mailings right now, you'll avoid disappointing friends and loved ones at Christmas."

Postmaster Phelan offers the following suggestions:—

The first thing to do is to check your Christmas card list very carefully, make sure that each address includes full name, street and number, city, zone and state. When you use zone numbers, you reduce the number of times your mail is handled, because zoned mail can be sorted more quickly. In fact, it has been the experience of the Post Office Department, that zoned mail gain as much as 8 or 10 hours. A little planning right now can eliminate a lot of headaches when the Christmas rush is on.

Obtain free labels from the Post Office which read *All for Local Delivery* and *All for Out of Town Delivery* so that before you mail your Christmas cards, you can sort them into two groups, with the addresses all facing one way, thus expediting delivery.

New postage rates are now in effect,

be sure to use only First Class four cent or seven cent Air Mail postage on your Christmas cards. All cards sent by First Class mail may include a personal handwritten message, whereas only a signature is authorized on cards that are mailed at the three cent Third Class rate.

By all means include your return address on every Christmas card envelope, this is not only socially correct, but it helps you and your friends in keeping mailing lists up to date.

Christmas cards and gifts for out-of-state destinations should be mailed first, preferably well before December 10, and those for nearby points should be mailed by December 15.

Postmaster Phelan says, "the fine cooperation of the Scovill Manufacturing Company and its employees, has been one of the contributing factors to the great progress in getting the Christmas mails through on time."

Yule Mail for Overseas

Dates designated for mailing parcels and greeting cards to our Armed Forces overseas are:—

Surface mails—by November 20

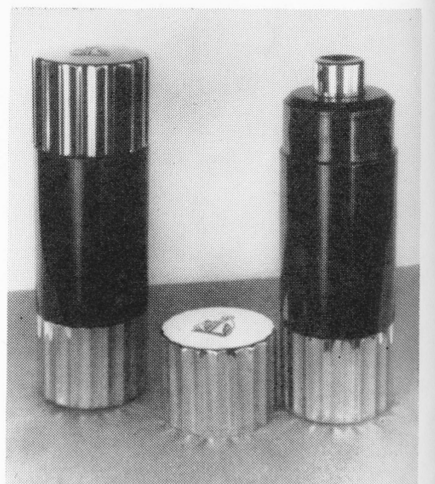
Air mail—December 1 to 10

Aerosol Container for Lanvin

The Cosmetic Container Division announces another new item added to their line — this attractive aerosol container for Lanvin Parfums (right) which will deliver three ozs. of toilet water through an unmetred valve.

Designed by Cartier, the new container is unique and distinctive in appearance. The cap and base are golden polished brass with fluted sides and Lanvin's trademark is debossed on the top of the cap. The center section is polished black anodized aluminum.

The container employs a valve made by VCA, Inc. of Bridgeport, and a bottle supplied by T. C. Wheaton of Millville, New Jersey.



Service Awards

Fifty Years

Roy A. Ferris, Waterville Div.
November 8, 1958

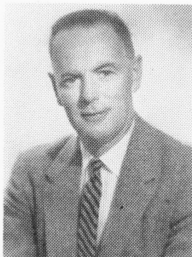
Forty Years



Pietro Rossi, Repair Dept.
November 15, 1958

Sam Russo, Waterville Div.
November 7, 1958

Twenty-Five Years



John J. Foley
Estimating
Nov. 6, 1958



Manuel Spinola
Casting
Nov. 10, 1958



Maria Brevetti
Lipstick
Nov. 17, 1958

Edward J. Seaward, Millwrights
November 9, 1958

Louis H. Cipriano, Casting Shop
November 10, 1958

Stephen Ponzillo, East Machine
November 16, 1958

Your Social Security

Are you one of those younger workers who is not interested in social security because retirement is a long way off?

If so, maybe it would be well to think of the benefits that could be paid to your family if you should die.

Remember that monthly benefits are generally payable to any of the following survivors:—

- 1) a widow at age 62
- 2) children under 18, including stepchildren and adopted children
- 3) a disabled child over 18 if he became disabled before 18
- 4) a widow under 62, if she has a child entitled to child's benefits in her care
- 5) a dependent parent or parents (mother age 62 or father age 65)

Ask for a copy of *Your Social Security* at the Bulletin Office. The information in it is important to you whether you are 25 or 65.

Dog Training Classes

A special program is planned for Tuesday, Nov. 25. A demonstration of dog obedience work will be presented by Mr. Joseph McShain, the trainer of the Waterbury club. This will feature dogs that have received, or are in the process of earning, Certificates of Achievement, plus an added demonstration of various tricks learned by the dogs just for fun.

All dog owners, and dog lovers, are invited to attend. All dog owners are invited to join the classes which are held every Tuesday from 7:30 to 9:30 p.m. at Doolittle Hall.

Ten Years

Nov. 7—James J. Coffey, Waterville Div.; Nov. 8 — Joseph Lombardo, Welders; Willis H. Machin, Jr., Rochester, Gen. Mfg.; Henry F. Schissler, Metals Research; Charles W. Mackey, Jr., Waterville Div.; Nov. 9—James C. Doyle, Cont. Strip Mill; Charles R. McCue, Waterville Div.

Nov. 10—Teda Tarullo, Relay; Nov. 12—Francis M. Baker, Mfg. Eyelet; Nov. 15—Edward J. Mitchell, Extruded Rod Mill; Nov. 16—John P. McDonnell, Slide Fastener Sales; Ann S. Palmer, Sturgis, Mill Div.; Nov. 17—Leonard S. Mowad, Waterville Div.

New Holding Fixture Assures Safety



Paul Schoenmehl demonstrates the new holding fixture being used on drill press work in Metals Research. Note the two metal inserts in the pan which form a "V" to wedge the brass sample. As the rotating drill is lowered to the work, the wedges hold the sample steady and keep it from rotating.

Drills are used in many departments for metal cutting operations. In Metals Research, samples of brass are drilled to obtain metal chips for testing purposes. Obviously, the piece to be drilled must be held steady or it will rotate with the drill—if a hand is used to do the holding, serious injury could result.

In Metals Research, a novel holding fixture has been devised which assures complete safety. A metal dustpan with a closed front end is used. An added feature is the handle which provides a place to keep the left hand out of the way of the drill and still provide adequate control.

When you perform a metal cutting operation at work, or in your own home work shop—this is especially true for hand electric drills—never use your hand as a holding fixture.

Girls' Club To Sell Yule Cards, Candy

The shipment of Christmas cards to be sold by the Club has arrived and they are now on sale in the Employee Services Dept., ground floor of the Employee Relations Building. Candy has been ordered and delivery is expected very shortly. These also will be available at the same location.

The money received from the sale of these articles is used to finance the "helping hand" activities of the Club at Christmas time which include food and articles of clothing for needy families, and the popular and always well attended party for children of Scovill employees.

Marion Thompson, of Planning, is chairman of this activity.

Children's Hallowe'en Party Attracts Over 300



A grand march, movies and refreshments made up the program at the annual SERA Hallowe'en party for children of Scovill employees. Held at Doolittle Hall on Thursday, October 30, the affair was attended by approximately 300 youngsters in all types of costumes.

Judges were John Capone, Peg Sanchi, Margaret Snowden, John Mitchell and William Finnegan and they had quite a chore in picking out the 18 prize winners.

The younger set: prettiest—Lee Ann Conrad, Janice Salman, Lisa Burnett; funniest—Al David Parnivich, Tom Deinantick, Robert Belevetz; most original—Cheryl Kowalski, Carol Ann Jacovich, Laurence Pronovost.

The older group: prettiest—Donna Renna, Cheryl Curtis, Judy Reiser; funniest—Michael Marconi, Dick O'Dea, James Adamsky; most original—Ann Capone, Gene Sherman and Carole Capone.

Three Succumb

JAMES J. MCCUE died on October 31, 1958 after a short illness.

Mr. McCue came to Scovill in October, 1936 as a guard in our Plant Protection Dept. and except for a short time out of the plant, had served in that capacity until his death.

PERRY M. SYLVERNALE died on November 1, 1958 after a brief illness.

Mr. Sylvernale retired in January, 1955, with over 31 years of continuous service. He had served as cost clerk, as Scrap Conservator during the war years, and, from 1947 until retiring, had been a buyer in the Purchasing Dept.

JULIA FITZMAURICE died on November 4, 1958 after a brief illness.

Mrs. Fitzmaurice had completed 47 years of service when she retired in October, 1941. Always a bench worker, she had served in various departments, her last 17 years in Scovill had been in the Lipstick Dept.

Retiring Employees Given Warm Send-off by Co-workers



1) Four recent retirees were feted at a dinner held in Doolittle Hall given by their co-workers and associates of the General Mfg. Division.

President S. T. Williams (center) presented tokens of remembrance to the four, whose combined Scovill service records total approximately 190 years.

The men, who have been connected with the Tool Division during most of their careers here are: Ariste Beurdeley, here over 49 years; Rene Reuter, over 48 years; Irving Holiban, over 52 years; Thomas Dowling, over 40 years.

2) Ariste Beurdeley and Thomas Dowling were also honored by their co-workers in their department, the General Manufacturing Tool Room.

3) Laura Lessard is guest of her co-workers in the Lipstick Dept. She retired on November 1, 1958 with over 35 years of service.

4) Charles Wenzel receives a token of remembrance from Foreman Michael Carpinella on behalf of his co-workers in the Button Model Design Room. He retired on November 1, 1958 with almost 49 years of continuous service.

New Assignments

Accounting Department

Announced by Mr. M. L. Sperry, II, Executive Vice President:—

Mr. Lloyd F. George has been appointed Director—Waterbury Accounting Services, as of October 31, 1958. In this capacity he is responsible for the following functions:— Factory Accounting, Payroll, Credit, General Accounting, Tabulating, Mailing, Addressograph and Transcribing.

Mr. George will report to the Executive Vice President; the Waterbury Division accountants will report to the Comptroller, Mr. G. H. Wadsworth.

Forging & Screw Machine

Announced by Mr. W. H. Machin, General Manager:—

Mr. William F. Sutton has been appointed Project Engineer for the Screw Machine Product line, with responsibilities to analyze all production methods, promote the development and expansion of machining steel and other metals as an aid to increase our volume of business. This appointment is effective as of November 6, and Mr. Sutton will report to Works Manager N. J. Schaffer.

General Manufacturing Division

Announced by Mr. G. L. Chase, Factory Superintendent:—

Mr. Harold Henriksen has been appointed Foreman of Dept. 354, General Manufacturing Tool Dept., effective November 3, 1958. He will report to the Factory Superintendent.

Pinochle Tourney

Scores as of November 6:—

Matulunas	35,320	214,935
Laudate	36,435	208,710
Mancini	34,855	201,745

Individual high scorers:—Laudate, 4,365; March, 4,350

Thanksgiving Shutdown

The Waterbury and the Waterville divisions of Scovill will be closed on Thursday, November 27, in observance of Thanksgiving Day.

All departments will open with the first shift on Friday, Nov. 28.

Any deviation from the above will be announced by departmental posting or by individual notification.

Classified Ads

(Telephone numbers are PLaza exchange unless otherwise noted. These ads are published as a free service to Scovill employees only. They are to be submitted in writing or brought in to the Bulletin Office. Telephone calls for ads cannot be accepted. Written ads must bear employee's name, check number and department name. The deadline for all ads is 5 p.m. on the Tuesday preceding the issue date. The BULLETIN is issued on the first and third Mondays.)

For Sale

Wooden storm windows: two 28 x 59"; two 39 x 68 1/2". Call 3-5709.

Girl's pre-teen red chinchilla coat with navy blue collar, size 14; man's suit, size 42 stout. Call 5-5808.

1956 4-door Chevrolet, radio, heater, automatic transmission. Call 6-1884.

Mahogany bookcase, \$9; maple cricket chair, \$5; four white kitchen chairs, \$8. Call 5-3803.

Mahogany buffet and mirror, \$45; parlor oil stove, \$20; blond veneer cedar chest, \$20. Call 6-4178.

Parlor stove, oil pot type, late model, good condition, \$5. Firewood, one cord of wood cut in foot and a half lengths for fireplace or furnace, \$15, self delivery. Call 5-9151.

Wedding gown and veil, chantilly lace and tulle, size 9-11. Original cost, \$125; will sell for \$70. Call 5-9151.

Corner lot, 129 x 124' in Wolcott. Call 5-7256.

Girl's dresses, size 13; new sheath with jacket, \$15; powder blue Princess style, almost new, \$10; one red and one yellow gown, each \$5; gray leather bookcase head-board for twin bed, \$5; three-quarter iron bed free. Call 6-9290 mornings, or 5-5520 after 3:30 p.m.

Lot on Pleasant St., Wolcott, 100 x 200'. Call 3-1887.

Blue living room chair, very clean, Call 3-6296 after 5 p.m.

Two 8.00 x 15 snow tires, retreads, fair condition, \$10. Call 3-0222.

Combination storm and screen doors. Two, 36 x 82", practically new—make an offer. Call Naugatuck Park 9-5640 after 6 p.m.

1956 two-tone blue Chevrolet, automatic transmission, radio, heater, A-1 condition; also Spanish guitar, good condition, \$25. Call 6-1884.

Hot water furnace oil burner and five radiators, \$150. Call AT 3-93888.

Brand new flexalum venetian blinds:— two 45 x 49", eggshell with duck cloth tape, \$8 each, regular price is \$12; two 30 1/2 x 60 1/2", white with white cloth tape, \$4.50 each, regular price is \$10; one 34 1/2 x 53", white with green tape, \$4.50, regular price is \$10.20. Call 6-6327 or 9-9260.

Florence parlor stove, 9" burner, chrome pipes, in excellent condition. Call 6-3283.

Woman's brown cloth coat with fur collar; black fur coat, size 36. Call 4-3307.

Two picture window blinds; venetian blinds—two 48 3/4 x 52 1/2", four 17 1/4 x 52 1/2". Also, lady's dresses, size 14. Call 3-4741 after 4:30 p.m.

1957 green Plymouth four-door sedan, like new, low mileage. Call 5-7124.

Two 50-gal oil drums; work bench, 54 x 26"; French door; General Electric ironer; Thor ironer; electrolux vacuum cleaner. Call 4-0346.

Two-family house, 146 Meriden Road (5-5); oil furnace, steam heat. Call 3-1942.

White Chicago roller skates, like new, size 3 1/2, \$8. Call 3-6751 after 6 p.m.

Four storm windows and matching screens, 54 1/2 x 36", excellent condition. Call 3-1098 after 6 p.m.

Living room suite, \$50. Call 6-4178.

\$500 worth of electric trains, O'Gage, Sante Fe and locomotive; train table, tracks, cars, switches, etc. Reasonable. Call 5-9027.

Wanted To Buy

Child's fire engine or car, in good condition; wonder horse. Call 5-5808.

Apartment-size washing machine. Call 3-1554 after 3 p.m.

Found

Sum of money found in East Plant. Call Ext. 345.

Lost

Lady's Kelton wrist watch, yellow gold, with stretch band. Lost in ladies' rest room in Blanking. Call Ext. 517.

POSTMASTER—If addressee has removed and new address is known, notify sender. Dept. B, on Form 3547, postage for which is guaranteed by the sender.

Published by
SCOVILL MANUFACTURING COMPANY
99 Mill Street, Waterbury, Conn.
Return Postage Guaranteed

Sec. 34.66, P. L. & R.
U. S. POSTAGE
PAID
WATERBURY, CONN.
PERMIT No. 123